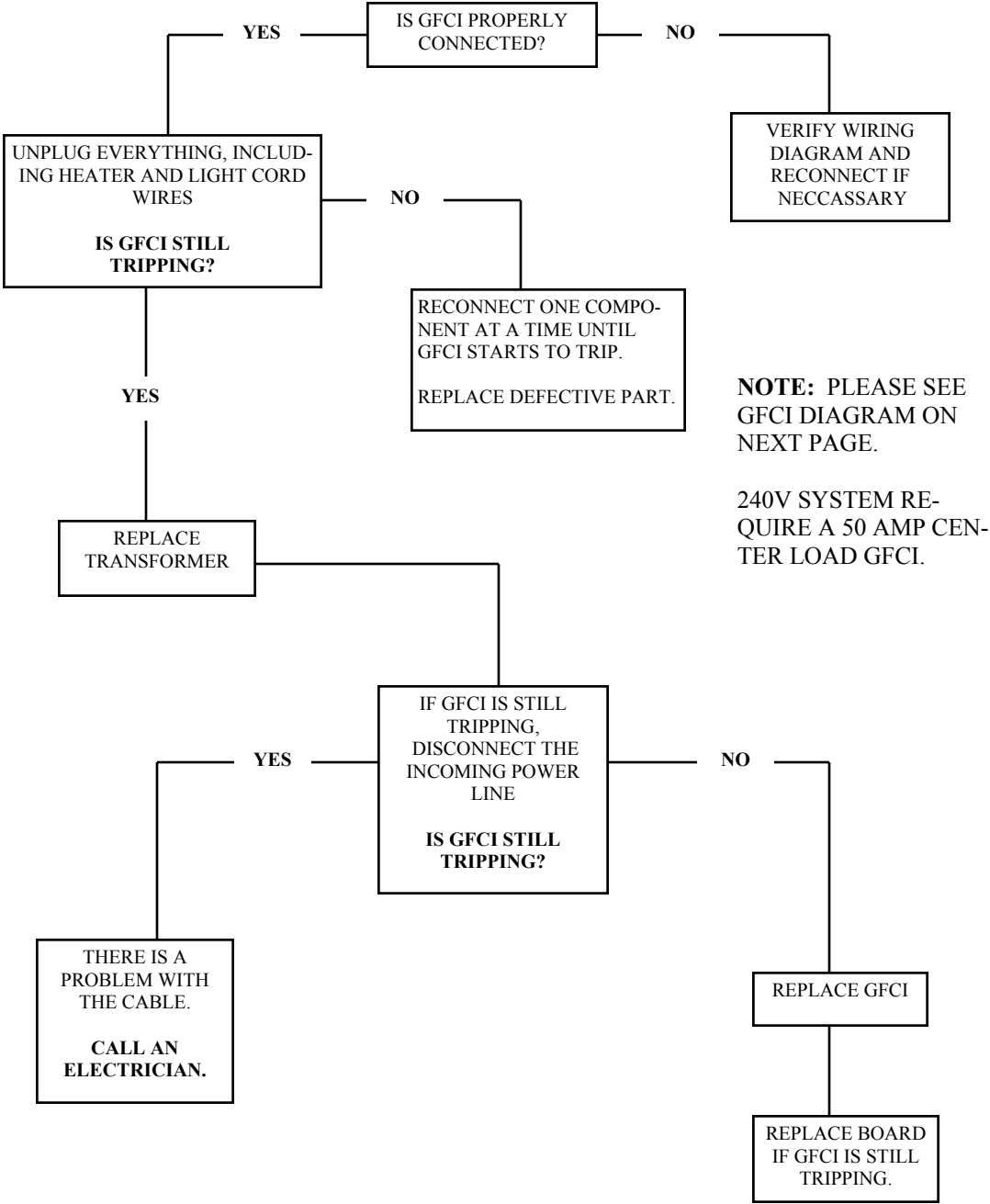
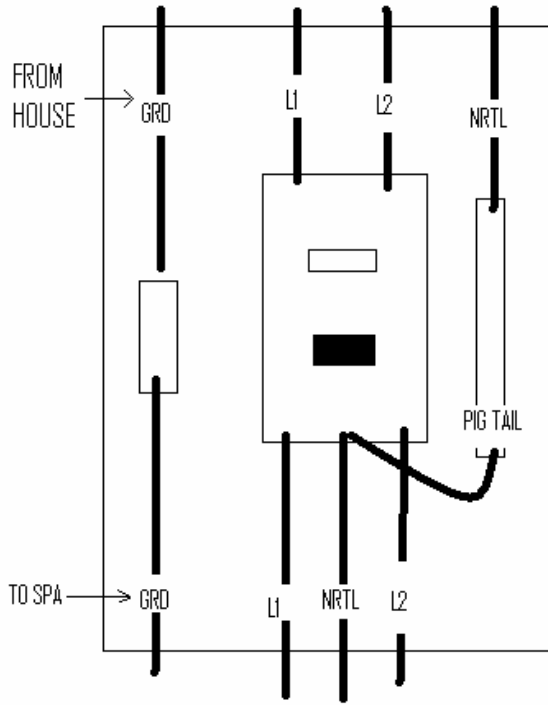


# TROUBLE SHOOTING

## GFCI TRIPPING



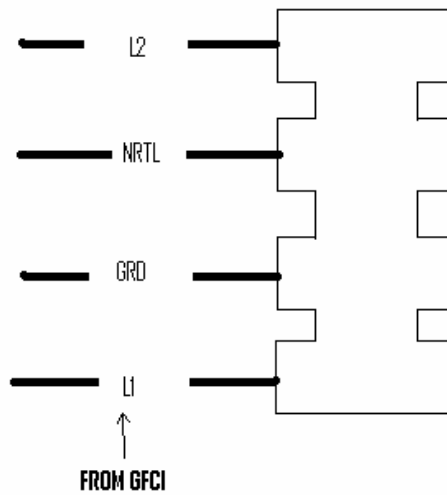


OUR SPAS REQUIRE A 50 AMP CENTER LOAD GFCI

THEY ALSO REQUIRE 4 X 6AWG WIRE RAN FROM THE GFCI TO THE SPA

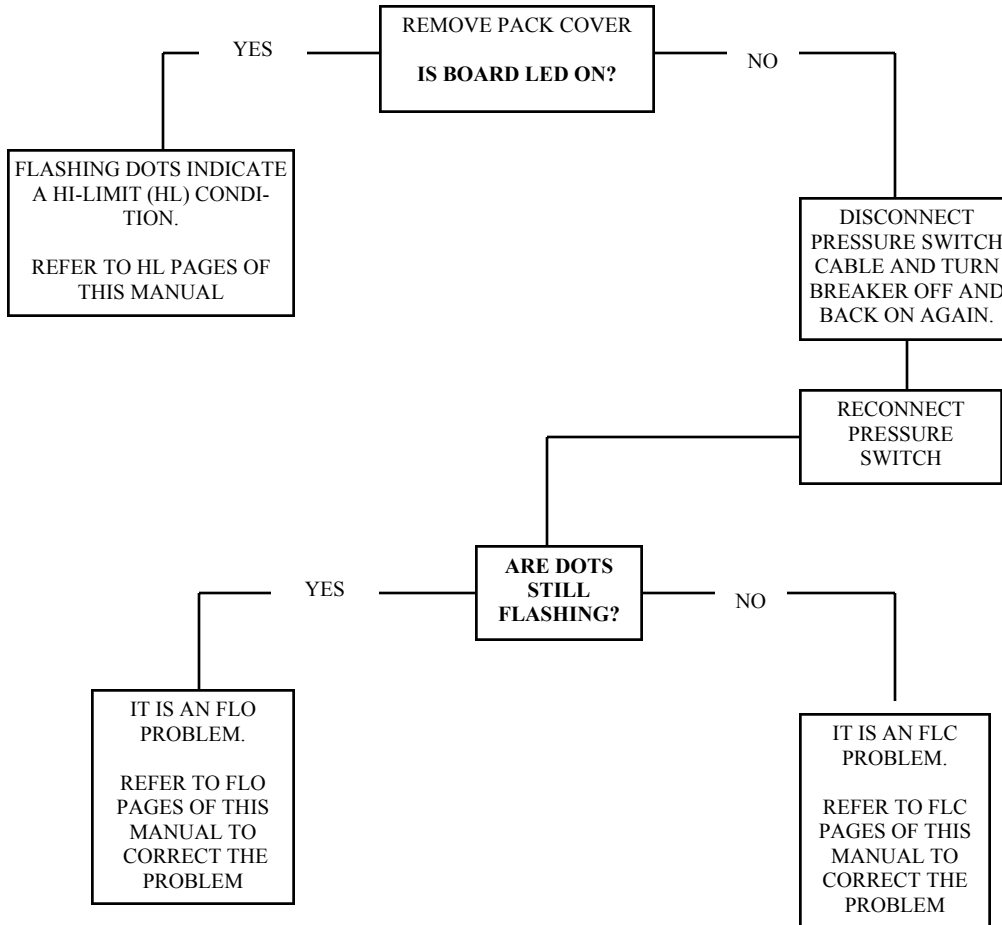
THE NRTL LINE FROM THE SPA MUST BE CONNECTED TO THE NRTL OF THE GFCI. THE PIG TAIL ON THE GFCI MUST BE CONNECTED TO THE NRTL BAR.

SPA PACK TERMINAL BLOCK

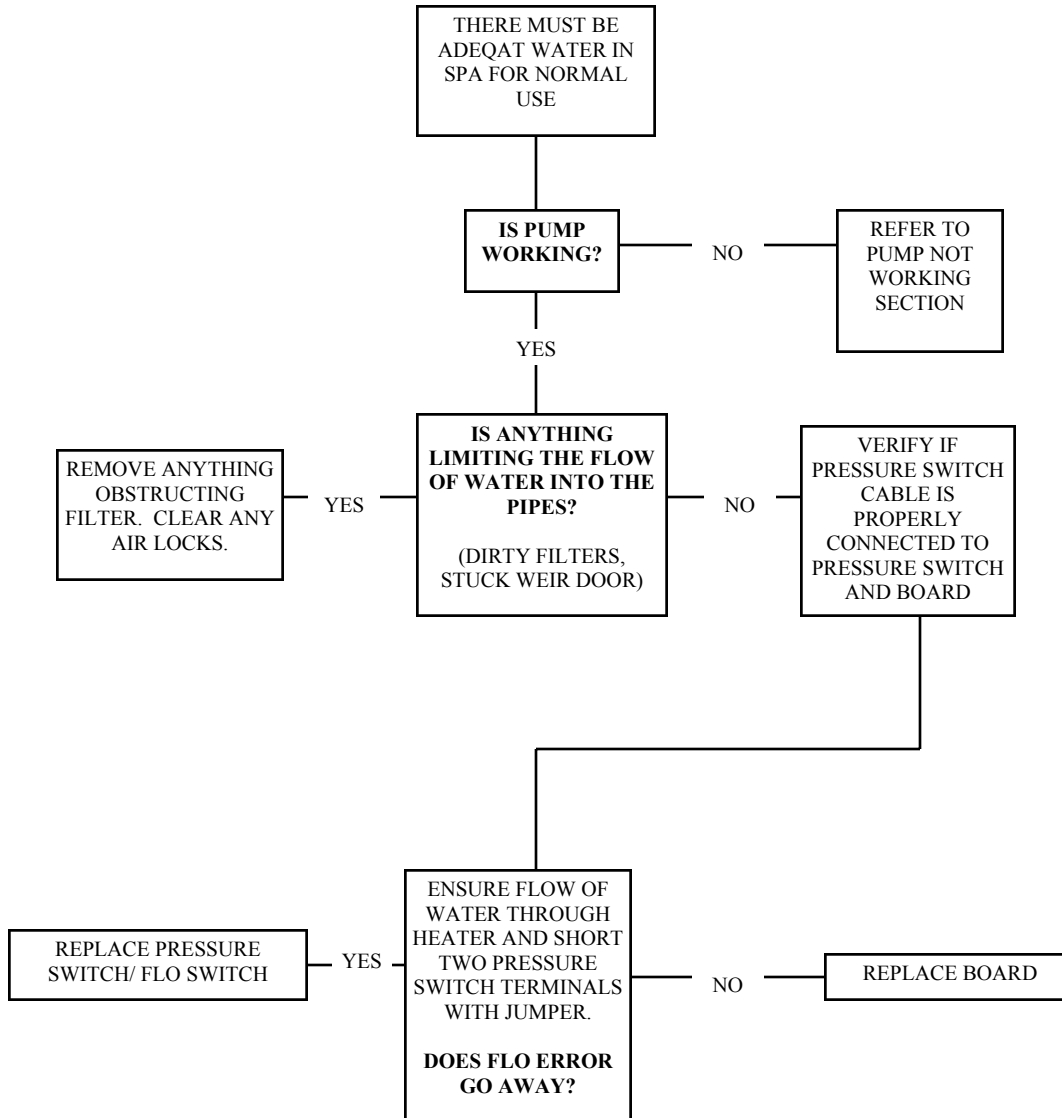


### 3 FLASHING DOTS ERROR

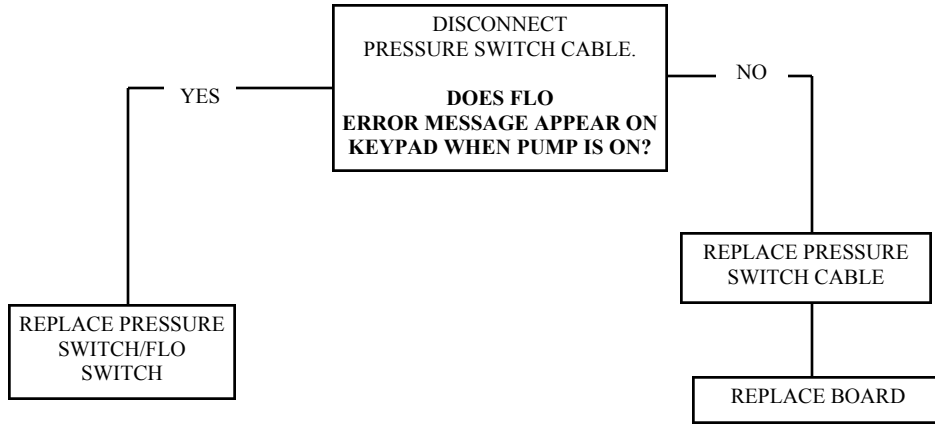
#### 3 FLASHING DOTS ON THE DISPLAY. (FLO, FLC OR HL ERRORS)



# FLO ERROR

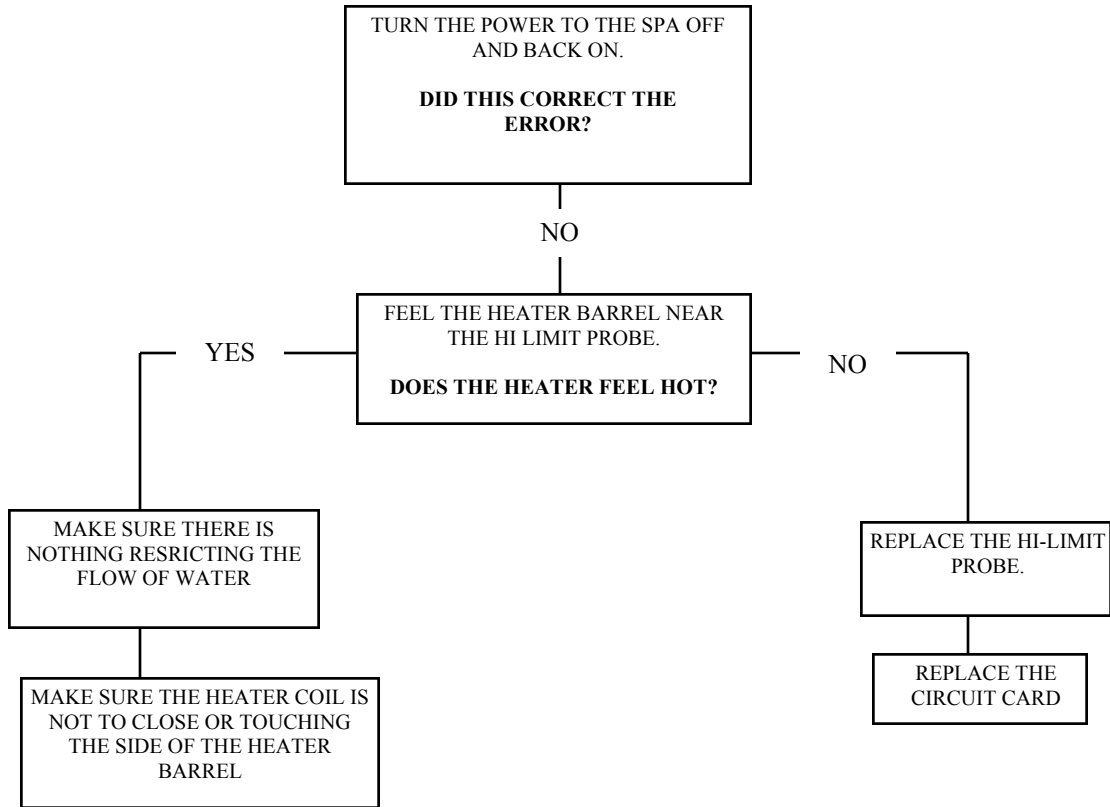


# FLC ERROR

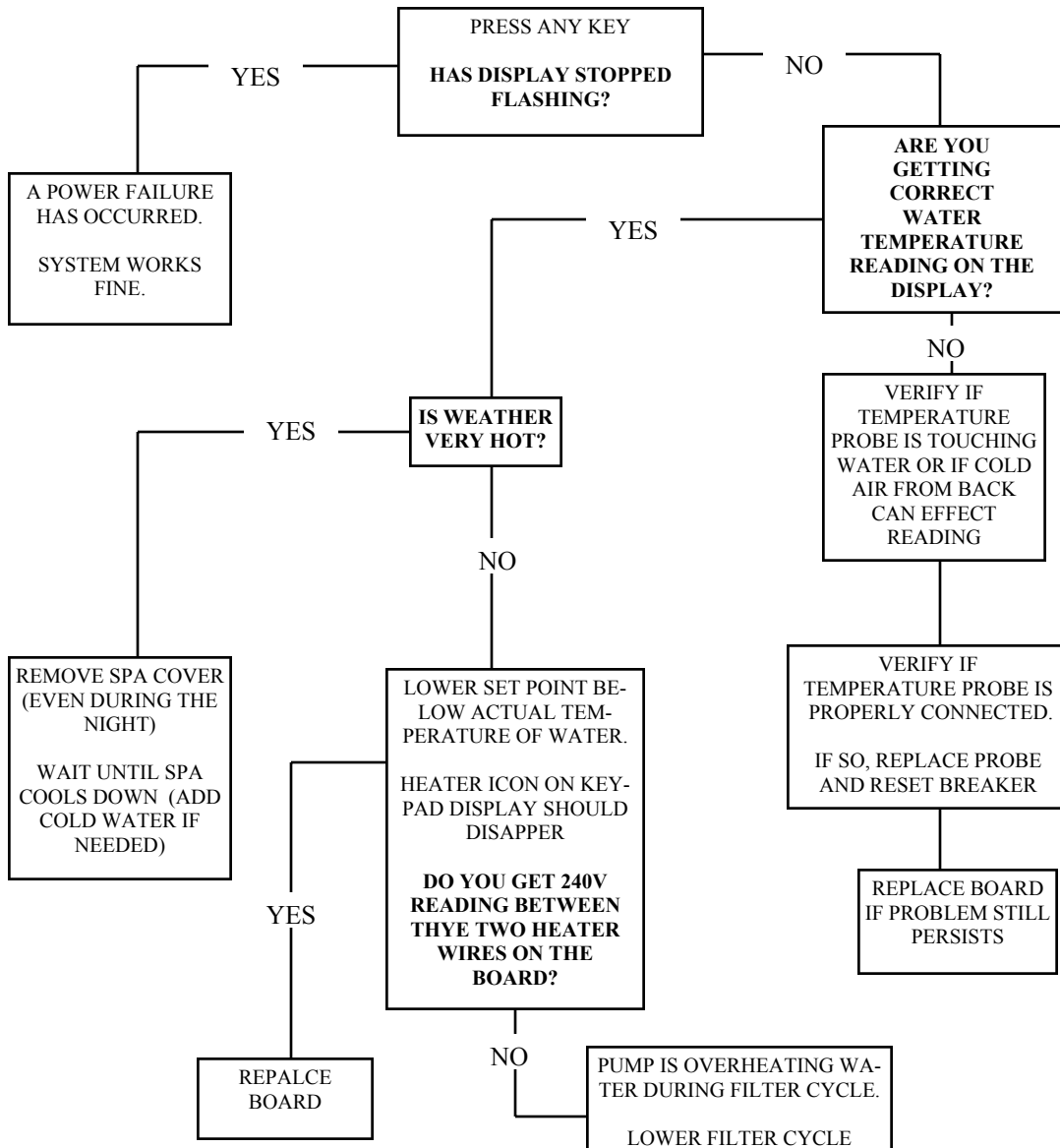


## HL ERROR

(THIS ERROR IS DISPLAYED BY THREE FLASHING DOTS AND AN LED LIGHT ON THE CIRCUIT CARD)

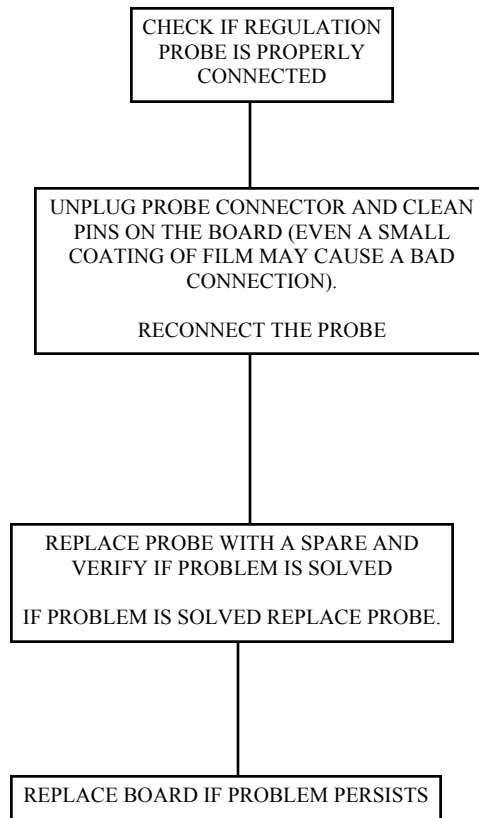


## DISPLAY FLASHING ERROR

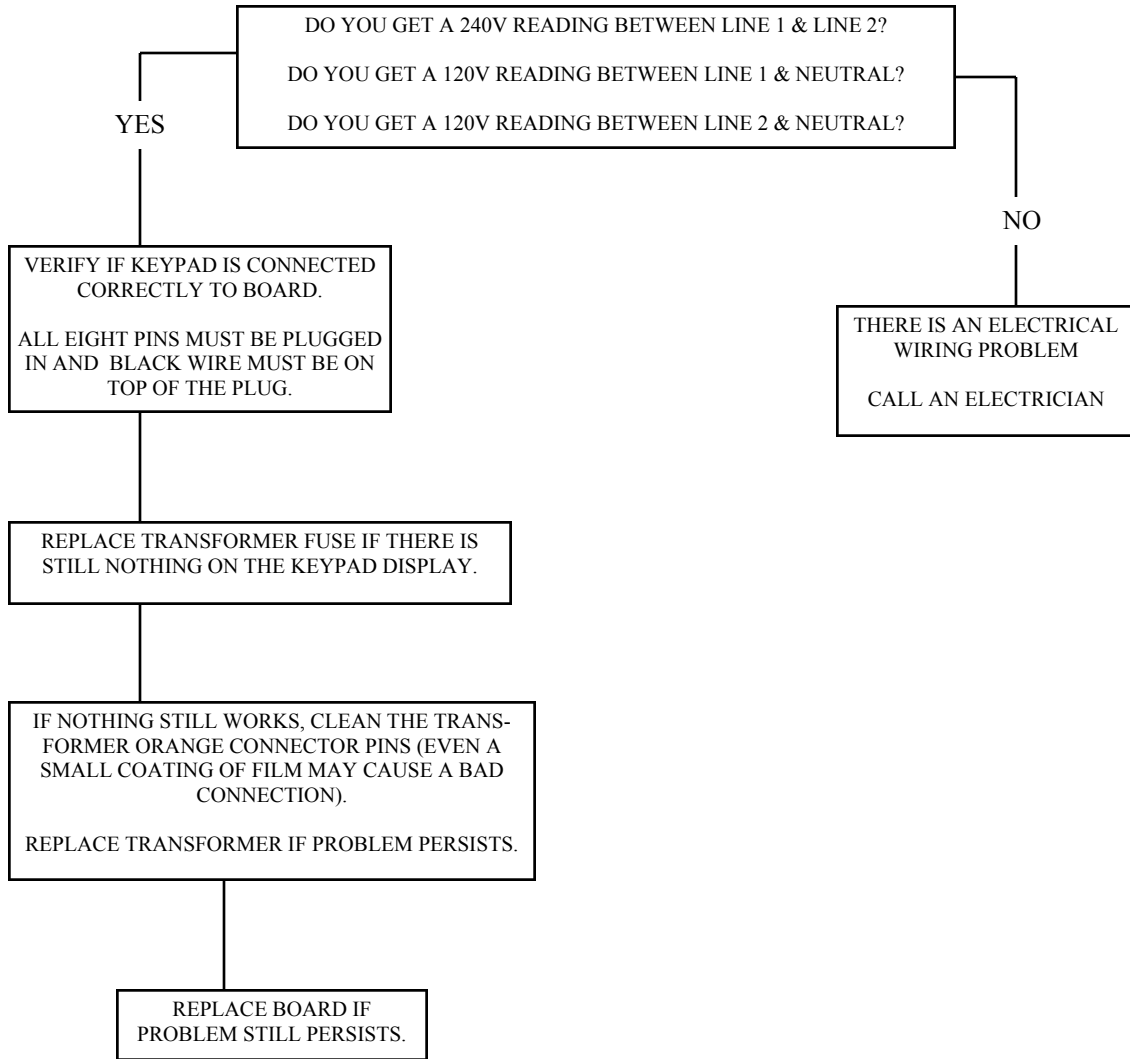


# TOPSIDE READS WRONG TEMPERATURE OR 32° F

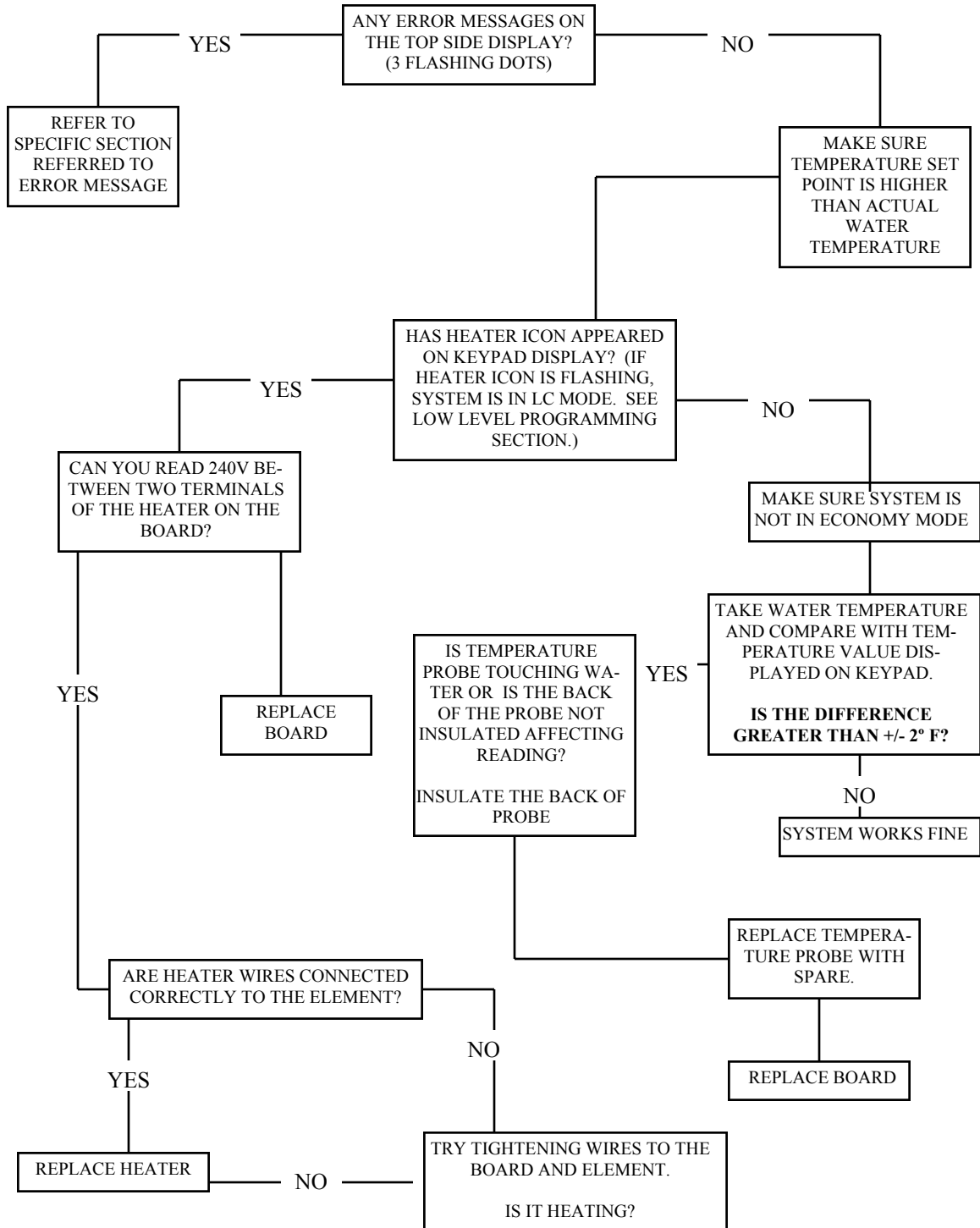
PRESSING ANY KEY AFTER EACH STEP RESETS THE SYSTEM



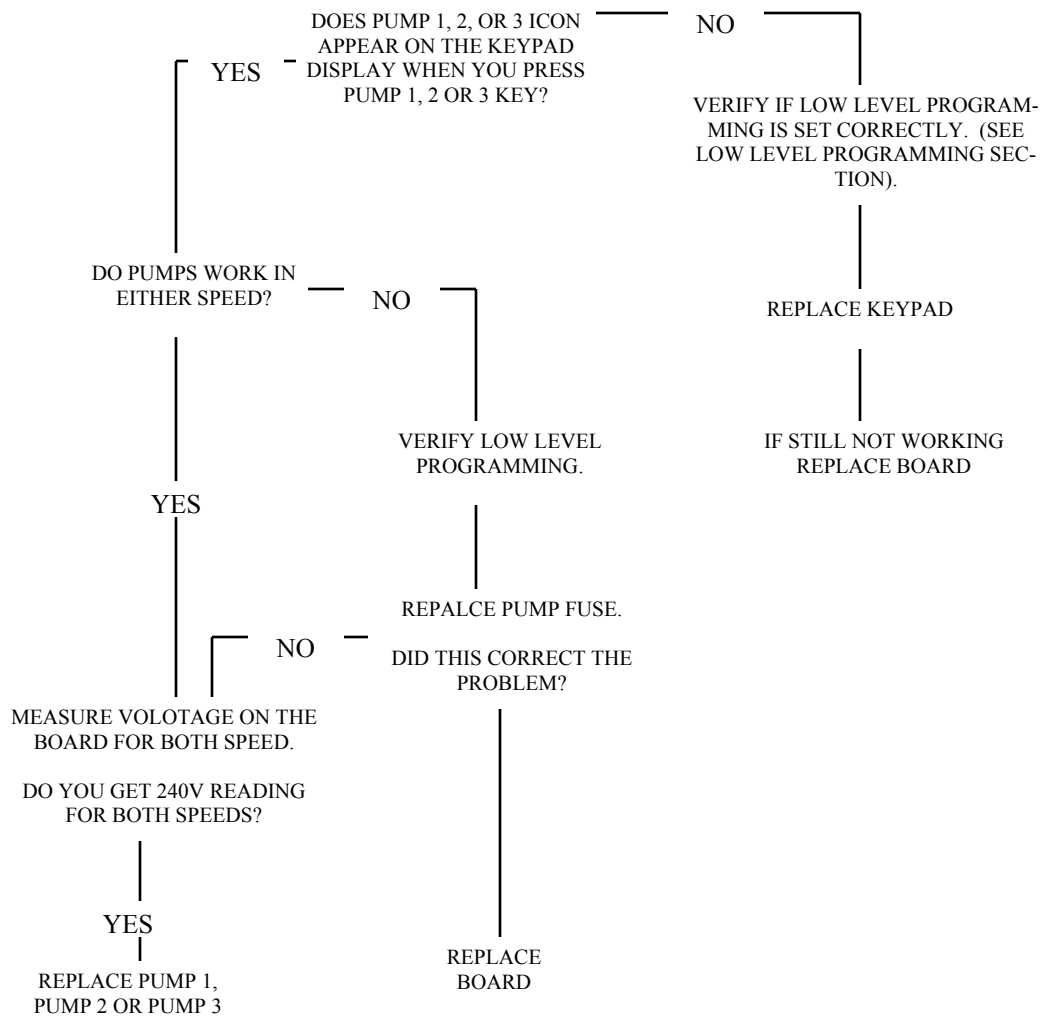
# NOTHING SEEMS TO WORK



# SPA NOT HEATING



# PUMP PROBLEM



# LOW LEVEL PROGRAMMING

## MSPA-MP (PLATNIUM)

1. PRESS AND HOLD THE PROGRAM KEY FOR 20 SEC.
2. RELEASE THE PROGRAM KEY WHEN CU X APPEARS (X STANDS FOR THE DESIRED NUMBER)
3. USE THE TEMP UP AND DOWN KEY TO CHANGE CURRENT SETTING.
4. PRESS THE PROGRAM KEY L1 X WILL APPEAR
5. USE THE TEMP UP AND DOWN KEY TO CHANGE CURRENT SETTING.
6. PRESS THE PROGREAM KEY TO RESET THE SYSTEM.

**CU 1= LOW CURRENT**

**0 = HIGH CURRENT**

**L1 1= 3 FUNCTION LIGHT**

**0= 1 FUNCTION LIGHT**

## MSPA-MA3 (GOLD)

1. PRESS AND HOLD THE PROGRAM KEY FOR 20 SEC.
2. RELEASE THE PROGRAM KEY WHEN P1 X IS DISPLAYED
3. USE THE TEMP UP AND DOWN KEY TO CHANGE SETTING.
4. PRESS THE PROGRAM KEY P2 X WILL DISPLAY.
5. USE THE TEMP UP AND DOWN KEY TO CHANGE SETTING.
6. PRESS THE PROGRAM KEY P3 X WILL DISPLAY.
7. USE THE TEMP UP AND DOWN KEY TO CHANGE SETTING.
8. PRESS THE PROGRAM KEY LI X WILL DISPLAY.
9. USE THE TEMP UP AND DOWN KEY TO CHANGE SETTING.
10. PRESS THE PROGRAM KEY CU X WILL DISPLAY.
11. USE THE TEMP UP AND DOWN KEY TO CHANGE SETTING.
12. PRESS THE PROGRAM KEY GO X WILL DISPLAY.
13. USE THE TEMP UP AND DOWN KEY TO CHANGE SETTING.
14. PRESS THE PROGREAM KEY TO RESET THE SYSTEM.

**P1 1 = SINGLE SPEED PUMP**

**2 = TWO SPEED PUMP**

**P2 1 = NOT INSTALLED**

**0 = INSTALLED**

**P3 1 = NOT INSTALLED**

**0 = INSTALLED**

**L1 1= 1 FUNCTION LIGHT**

**0 = 3 FUNCTION LIGHT**

**CU 1 = HIGH CURRENT**

**0 = LOW CURRENT**

**GO 1 = PLATNIUM (OLD STYLE)**

**0 = GOLD CLASS**

